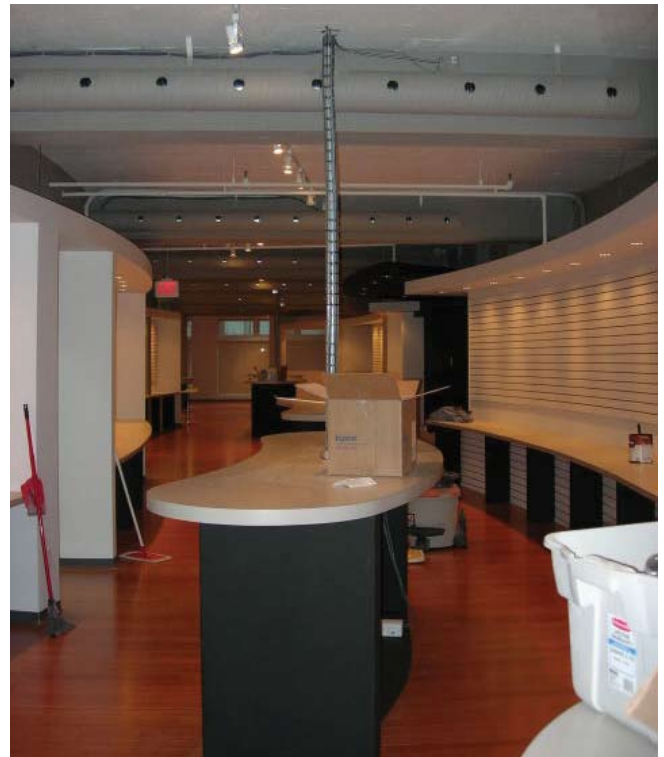


# Historic Yaletown, New Apple Store

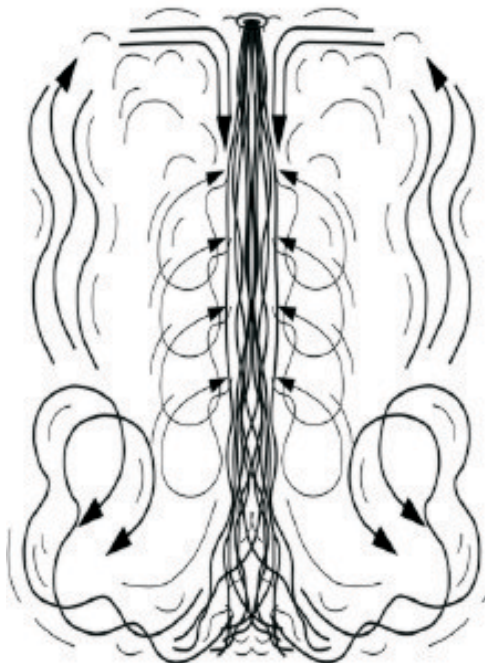
This new Apple computer store is set in historic Yaletown Vancouver B.C. The Yaletown district is full of old warehouse buildings with low ceilings and large cross beams. Renovations were needed for the building but the goal was to limit and structural changes to the building.

Bill Bush from Bush HVAC sales Ltd. introduced the building owner to Energy Saving Products Hi-Velocity Heating and cooling System and the benefits he could gain from the use of them in this historic building. The Hi-Velocity System uses a 8" - 10" main plenum's and 2" inch flexible ducts that branch off the main plenum. In the picture to the right drilled outlets were used instead of using 2" flexible ducts, this allowed for a quick installation of the plenum on the ceiling with no structural changes. When the higher-pressure air leaves the vent of the plenum, it expands rapidly and causes a lower air pressure around the vent. This causes the room air to be drawn toward the airstream that is leaving the vent. This creates a Venturi Effect and thoroughly and continually mixes the room air, eliminating the possibility of hot and cold spots from developing in the room.



**Main Display Area of the Store with a plenum run illustrating the use of drilled outlets**

**Vent Outlet Utilizing the Venturi Effect**



The building owner decided to go with High velocity equipment so that the ceiling height could be maintained and no structural changes would be needed to the building.

Energy Saving Products Ltd. Hi-Velocity System was the ideal choice, the round plenum runs on the ceilings with drilled outlets were easily installed allowing for a fast setup time and was cost effective.

A total of seven tons of cooling is conditioning this building. In this application two Hi-Velocity units installed in the vertical position (up-flow) were used, a HV-70 and a HV-100. They were easily placed in out of the way places, as the Hi-velocity System does not need to be centrally located.



**Located in corner, out of the way saving space in the building**